

TOP

An easy-to-use GUI-based tool providing intuitive and effective access to all HPE NonStop subsystem and components from a Windows workstation.



TOP reduces complex tasks to simple point-and-click operations to save time, increase productivity, and reduces the potential for errors.

Purpose

The Operations Pack (TOP) provides a front-end to HPE NonStop server systems and networks using a standard interface. Using TOP any authorized user can operate a HPE NonStop server much more effectively and with fewer mistakes. Experienced staff accomplishes much more and inexperienced staff learn faster.

Key Features

- Point and click to navigate, view and/or edit files, drag/drop to copy files or other components
- Extensive OSS support
- Point and click Backup facility
- Individual operator security profiles to prevent unauthorized access
- Command auditing and logging of changes for system audit purposes
- Wizards to increase productivity
- Integration with MR-Win6530 emulator. Lightweight version of MR-Win6530 emulator available for use with TOP at no extra cost
- Provides a consistent look for all Subsystems
- Provides top-to-bottom configuration, control and management access to most NonStop subsystems
- Integrated drag-and-drop tool for ftp, ftp/tls and sftp transfer between NonStop and Windows
- Powerful Guardian and OSS file editor with syntax support for many languages including TAL, TACL, COBOL, C, C++, Java, ENFORM and NBEXEC.
- Compile and fix code errors in editor
- Secure SSL connection between workstations and NonStop
- Built-in subvol/folder comparison with integration to Windows merge and compare tools
- Simplified CIP IP configuration, including iptables firewalls (from TOP 4.11)

Benefits

Reduced Downtime. NonStop servers are used in business critical environments where the cost of downtime is typically very high. It is recognized that the most common cause of outage of all NonStop servers relates to the human computer interaction. Improving the human computer interface therefore ultimately reduces the potential for downtime.

Less Training. TOP replaces complex command line interactions with recognizable point-and-click and drag-and-drop functions. Therefore TOP reduces the skill and training required to operate and manage NonStop servers allowing operators from other platforms to be cross-utilized more effectively.

Increased Productivity. TOP provides the best of two worlds - a graphical user interface and a 6530 terminal emulator. With two means of access, TOP enables users to learn how to use NonStop servers faster while experienced users can get direct access to command-line tools when required. Experienced NonStop users will find they can perform their work faster, with fewer syntax errors and less reference to the manuals.

Greater Self-Sufficiency. With an easy-to-use interface routine work can be assigned to less-skilled staff and end users are able to service many of their own enquiries. This allows skilled resources to be deployed more cost effectively.

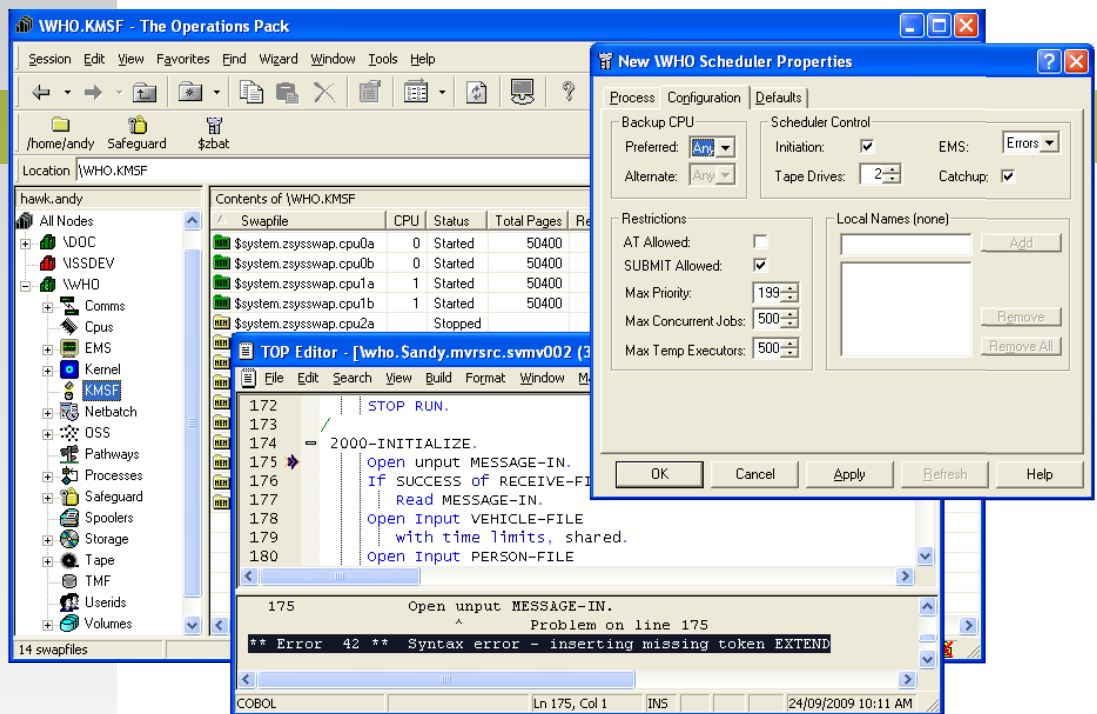
System Requirements

Workstation

- Microsoft Windows (XP, Vista, Windows 7, 8 and 10)
- 1 GB RAM
- 100MB available disk space

NonStop Server

- HPE NonStop Kernel (Guardian) G02 (or later) on S-series servers
- HPE NonStop Kernel (Guardian) H06 (or later) on Integrity NonStop servers
- HPE NonStop Kernel (Guardian) J06 (or later) on NonStop Blades servers
- HPE NonStop Kernel (Guardian) L14 (or later) on NonStop X servers
- TCP/IP
- 20MB disk space



Solution Overview

The TOP client runs on Windows machines and communicates with a server on the NonStop over TCP/IP (normally over an SSL-secured connection). The main TOP window can contain multiple tabs, each corresponding to a part of the Expand network. Additional persistent windows can be started for viewing EMS events, editing or viewing files and viewing Spooler jobs.

The TOP client utilises the rich functionality of the Windows environment to provide a modern interface to the NonStop for systems, operations and development staff:

- Configuration of objects for most NonStop subsystems is provided by TOP in syntax-free dialogs.
- Objects can be drag/dropped or copy/pasted to create a new definition (e.g. a new spooler print process).
- Files can be dragged between the Windows environment and Guardian or OSS file systems for easy file transfer. Files and subvols can be dragged within the NonStop environment to copy them.
- TOP will integrate with PC based compare tools for developers doing a compare and merge operation. It also has its own subvol/folder compare tool.
- Detail lists in TOP can be sorted on multiple columns and exported to a spreadsheet with a single click. The columns displayed in those lists can be altered and the columns themselves re-ordered.
- Colored icons and charts provide operations with a very quick visual depiction of the state of components in the system.
- Inline renaming of files and subvols works the same way as it does in Windows.
- Graphical depiction of DSAP output.

Because TOP instruments so many NonStop subsystems, it can provide some simple commands that integrate information from different subsystems. For example the following can be achieved with a few clicks of the mouse:

- Navigate between a process and the corresponding program file
- View list of TCP/IP socket opens and the program that the corresponding process is running
- Submit an edit file directly as a new Netbatch job
- Edit then run a file containing TAcl commands
- List the opens that a process has
- Choose an arbitrary selection of files and PAK them
- Drag from a PAK archive to disk to restore
- Find all processes running a specific object file

comforte 21 GmbH, Germany
phone +49 (0) 611 93199-00
sales@comforte.com

comforte, Inc., USA
phone +1-303 256 6257
ussales@comforte.com

comforte Asia Pte. Ltd., Singapore
phone +65 6818 9725
asiasales@comforte.com

comforte Pty Ltd, Australia
phone +61 2 8197 0272
aussales@comforte.com

www.comforte.com



<http://www.TICSoftware.com>
Phone: 516-466-7990
Email: sales-support@ticsoftware.com